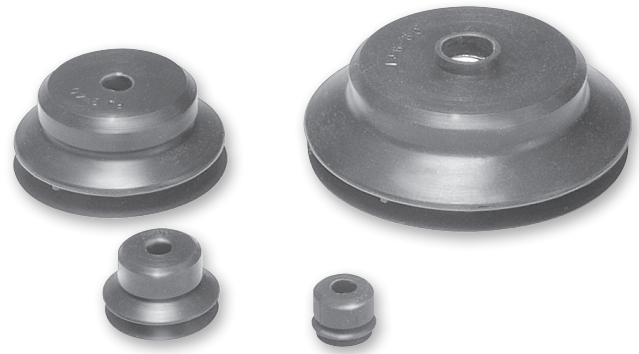


**Features**

Versatile bellow cup design provides increased sealing lip and level compensation for products with irregular, smooth, curved surfaces, or flexible sheets.

The short stroke bellow suction cup has an extra thin sealing edge and shorter stroke versus the traditional bellows for faster response. The cups are good for corrugated and smooth surfaces.



**Features**

- Short bellows for fast response
- More lip seal contact for corrugated, textured surfaces
- Soft sealing lip
- 6mm to 80mm

**Styles**

- PJTM series male thread connector
- PJTF series female thread connector
- PJTK series barbed bulkhead
- PJYK series 90° barbed adapter
- PJTYS series bulkhead level compensator

**Specifications**

Cup material	Nitrile	Nitrile ESD*	Silicon	Silicon ESD*
Material code	NBR	NBRE	SI	SIE
Operating temperature (°C)	-20° to +120°	0° to +60°	-60° to +250°	-10° to +130°
Color	Black	Black / Blue Dot	White	Black / Red Dot
Hardness, shore A (°Sh)	55 ±5	70 ±5	55 ±5	55 ±5
Electrical resistance (Ωm)	—	800 to 1000	—	5 to 15

\* ESD: Electric Static Dissipative Material

**How to order**

Cups assemblies and replacement cups are specified by cup diameter and material. Standard nitrile and silicon are listed on the following pages. To specify an alternative material, replace the cup material with alternative cup material code.

**Example:** To specify a cup assembly with silicon ESD (SIE), replace (NBR) with (SIE) in the part number. PJTM-20B-NBR-G1 becomes PJTM-20B-SIE-G1. Inquire with factory for availability.

**Application guide**

**Short Bellows**



- Flat surface, thin section
- Flat surface, any section
- Slightly bowed surface, thin section
- Slightly bowed surface, any section
- Bowed surface, thin section
- Soft porous material, thin section
- Soft porous material, any section
- Metal sheet handling
- Corrugated sheet handling
- Not for vertical lift

**A**

Technical

PFG Flat

PBG Bellows

PSV-CFS Flat

PJG Short Bellows

PCG Multiple Bellows

PUGB Flat Swivel

Cup Fittings

**Ordering Information**

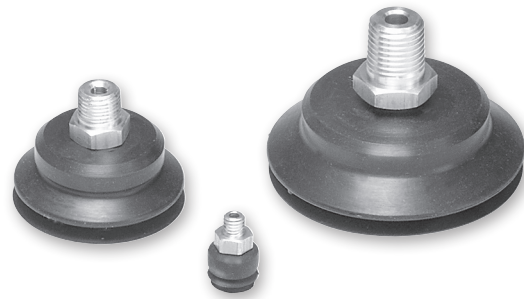
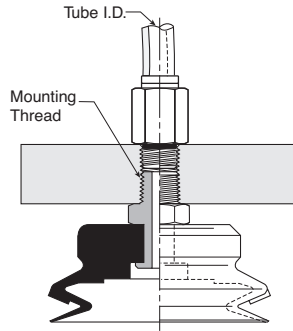
**PJTM Series Male Thread Connector**

Simple male connection for low profile positions secured to a plate or bracket. NPT, G, metric threads.  
 Fitting material: aluminum.

**Installation**

**Note:**

When installing cup assemblies, use a sealant material to secure the assembly and prevent vacuum leakage.



Cup diameter (mm)	Vacuum port	Complete assembly Nitrile	Replacement cup Nitrile (NB)	Complete assembly Silicon (SI)	Replacement cup Silicon (SI)	Replacement cup fitting
6	M5	PJTM-6-NBR-M5	PJG-6-NBR	<b>PJTM-6-SI-M5</b>	PJG-6-SI	FTM-5A-M5H
6	1/8 BSPP	PJTM-6-NBR-G1	PJG-6-NBR	<b>PJTM-6-SI-G1</b>	PJG-6-SI	FTM-5A-G1
8	M5	<b>PJTM-8-NBR-M5</b>	PJG-8-NBR	PJTM-8-SI-M5	PJG-8-SI	FTM-5A-M5H
8	1/8 BSPP	<b>PJTM-8-NBR-G1</b>	PJG-8-NBR	PJTM-8-SI-G1	PJG-8-SI	FTM-5A-G1
10	M5	<b>PJTM-10-NBR-M5</b>	PJG-10-NBR	PJTM-10-SI-M5	PJG-10-SI	TN-PF-15-M5
15	M5	<b>PJTM-15-NBR-M5</b>	PJG-15-NBR	PJTM-15-SI-M5	PJG-15-SI	TN-PF-15-M5
20	M5	PJTM-20-NBR-M5	PJG-20-NBR	<b>PJTM-20-SI-M5</b>	PJG-20-SI	TN-PF-20-M5
30	1/8 BSPP	<b>PJTM-30-NBR-G1</b>	PJG-30-NBR	PJTM-30-SI-G1	PJG-30-SI	FTM-20B-G1H
30	1/4 BSPP	<b>PJTM-30-NBR-G2</b>	PJG-30-NBR	PJTM-30-SI-G2	PJG-30-SI	FTM-20B-G2
30	M10	<b>PJTM-30-NBR-M10</b>	PJG-30-NBR	<b>PJTM-30-SI-M10</b>	PJG-30-SI	FTM-20B-M10
30	1/8 NPT	<b>PJTM-30-NBR-N1</b>	PJG-30-NBR	<b>PJTM-30-SI-N1</b>	PJG-30-SI	FTM-20B-N1
40	1/8 BSPP	<b>PJTM-40-NBR-G1</b>	PJG-40-NBR	PJTM-40-SI-G1	PJG-40-SI	FTM-20B-G1H
40	1/4 BSPP	<b>PJTM-40-NBR-G2</b>	PJG-40-NBR	PJTM-40-SI-G2	PJG-40-SI	FTM-20B-G2
40	M10	PJTM-40-NBR-M10	<b>PJG-40-NBR</b>	PJTM-40-SI-M10	PJG-40-SI	FTM-20B-M10
40	1/8 NPT	<b>PJTM-40-NBR-N1</b>	PJG-40-NBR	PJTM-40-SI-N1	PJG-40-SI	FTM-20B-N1
50	1/8 BSPP	<b>PJTM-50-NBR-G1</b>	PJG-50-NBR	<b>PJTM-50-SI-G1</b>	<b>PJG-50-SI</b>	FTM-50-G1H
50	1/4 BSPP	<b>PJTM-50-NBR-G2</b>	PJG-50-NBR	<b>PJTM-50-SI-G2</b>	<b>PJG-50-SI</b>	FTM-50-G2
50	1/8 NPT	PJTM-50-NBR-N1	<b>PJG-50-NBR</b>	PJTM-50-SI-N1	PJG-50-SI	FTM-50-N1
60	1/4 BSPP	PJTM-60-NBR-G2	PJG-60-NBR	PJTM-60-SI-G2	PJG-60-SI	<b>FTM-60-G2</b>
60	M10	PJTM-60-NBR-M10	PJG-60-NBR	PJTM-60-SI-M10	PJG-60-SI	FTM-60-M10
60	1/4 NPT	PJTM-60-NBR-N2	PJG-60-NBR	PJTM-60-SI-N2	PJG-60-SI	<b>FTM-60-N2</b>
80	1/4 BSPP	PJTM-80-NBR-G2	PJG-80-NBR	PJTM-80-SI-G2	PJG-80-SI	<b>FTM-60-G2</b>
80	M10	PJTM-80-NBR-M10	PJG-80-NBR	PJTM-80-SI-M10	PJG-80-SI	FTM-60-M10
80	1/4 NPT	PJTM-80-NBR-N2	PJG-80-NBR	PJTM-80-SI-N2	PJG-80-SI	<b>FTM-60-N2</b>

Most popular.



**A**

Technical

PFG Flat

PBG Bellows

P5V-CFS Flat

PJG Short Bellows

PCG Multiple Bellows

PUGB Flat Swivel

Cup Fittings

**Ordering Information**

**PJG Short Bellows Vacuum Cups**

**A**

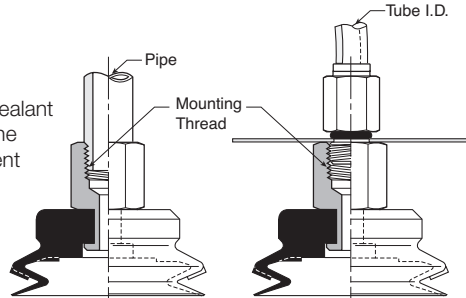
**PJTF Series Female Thread Connector**

Simple female connection for low profile positions secured to a plate or bracket. NPSF, G threads. Fitting material: aluminum.

**Installation**

**Note:**

When installing cup assemblies, use a sealant material to secure the assembly and prevent vacuum leakage.



Cup diameter (mm)	Vacuum port	Complete assembly Nitrile	Replacement cup Nitrile (NB)	Complete assembly Silicon (SI)	Replacement cup Silicon (SI)	Replacement cup fitting
6	M5	PJTF-6-NBR-M5	PJG-6-NBR	<b>PJTF-6-SI-M5</b>	PJG-6-SI	FTF-5A-M5
6	1/8 BSPP	PJTF-6-NBR-G1	PJG-6-NBR	<b>PJTF-6-SI-G1</b>	PJG-6-SI	FTF-5A-G1
8	M5	PJTF-8-NBR-M5	PJG-8-NBR	<b>PJTF--8-SI-M5</b>	PJG-8-SI	FTF-5A-M5
8	1/8 BSPP	PJTF-8-NBR-G1	PJG-8-NBR	<b>PJTF--8-SI-G1</b>	PJG-8-SI	FTF-5A-G1
10	M5	<b>PJTF-10-NBR-M5</b>	PJG-10-NBR	PJTF-10-SI-M5	PJG-10-SI	FTF-5A-M5
10	1/8 BSPP	<b>PJTF-10-NBR-G1</b>	PJG-10-NBR	PJTF-10-SI-G1	PJG-10-SI	FTF-5A-G1
15	M5	<b>PJTF-15-NBR-M5</b>	PJG-15-NBR	PJTF-15-SI-M5	PJG-15-SI	FTF-5A-M5
15	1/8 BSPP	<b>PJTF-15-NBR-G1</b>	PJG-15-NBR	PJTF-15-SI-G1	PJG-15-SI	FTF-5A-G1
30	1/8 BSPP	<b>PJTF-30-NBR-G1</b>	PJG-30-NBR	PJTF-30-SI-G1	PJG-30-SI	FTF-20B-G1
30	1/4 BSPP	PJTF-30-NBR-G2	PJG-30-NBR	PJTF-30-SI-G2	<b>PJG-30-SI</b>	FTF-20B-G2
40	1/8 BSPP	<b>PJTF-40-NBR-G1</b>	PJG-40-NBR	PJTF-40-SI-G1	PJG-40-SI	<b>FTF-20B-G1</b>
40	1/4 BSPP	PJTF-40-NBR-G2	<b>PJG-40-NBR</b>	PJTF-40-SI-G2	PJG-40-SI	FTF-20B-G2
50	1/8 BSPP	PJTF-50-NBR-G1	<b>PJG-50-NBR</b>	<b>PJTF-50-SI-G1</b>	<b>PJG-50-SI</b>	FTF-50-G1
50	1/4 BSPP	PJTF-50-NBR-G2	<b>PJG-50-NBR</b>	<b>PJTF-50-SI-G2</b>	<b>PJG-50-SI</b>	FTF-50-G2
60	1/4 BSPP	<b>PJTF-60-NBR-G2</b>	PJG-60-NBR	PJTF-60-SI-G2	PJG-60-SI	<b>FTF-60-G2</b>
60	1/4 NPT	<b>PJTF-60-NBR-N2</b>	PJG-60-NBR	PJTF-60-SI-N2	PJG-60-SI	<b>FTF-60-N2</b>
80	1/4 BSPP	PJTF-80-NBR-G2	PJG-80-NBR	PJTF-80-SI-G2	PJG-80-SI	<b>FTF-60-G2</b>
80	1/4 NPT	PJTF-80-NBR-N2	PJG-80-NBR	PJTF-80-SI-N2	PJG-80-SI	<b>FTF-60-N2</b>

■ Most popular.



**Ordering Information**

**PJG Short Bellows Vacuum Cups**

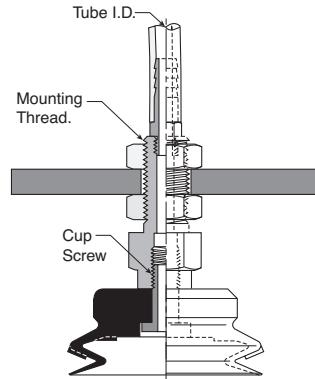
**PJTK Series Barbed Bulkhead**

Top stem connectors secured with jam nuts and allow tubing connections at the top side. Fitting material: nickel plated brass.

**Installation**

**Note:**

When installing cup assemblies, use a sealant material to secure the assembly and prevent vacuum leakage.



Cup diameter (mm)	Vacuum port	Complete assembly Nitrile	Replacement cup Nitrile (NB)	Complete assembly Silicon (SI)	Replacement cup Silicon (SI)	Replacement cup fitting
6	Barb	PJTK-6-NBR	PJG-6-NBR	<b>PJTK-6-SI</b>	<b>PJG-6-SI</b>	<b>FTK-5A</b>
8	Barb	<b>PJTK-8-NBR</b>	<b>PJG-8-NBR</b>	<b>PJTK-8-SI</b>	<b>PJG-8-SI</b>	<b>FTK-5A</b>
10	Barb	<b>PJTK-10-NBR</b>	<b>PJG-10-NBR</b>	<b>PJTK-10-SI</b>	<b>PJG-10-SI</b>	<b>FTK-15</b>
15	Barb	<b>PJTK-15-NBR</b>	<b>PJG-15-NBR</b>	<b>PJTK-15-SI</b>	<b>PJG-15-SI</b>	<b>FTK-15</b>
20	Barb	PJTK-20-NBR	PJG-20-NBR	<b>PJTK-20-SI</b>	<b>PJG-20-SI</b>	<b>FTK-20</b>
30	Barb	<b>PJTK-30-NBR</b>	<b>PJG-30-NBR</b>	<b>PJTK-30-SI</b>	<b>PJG-30-SI</b>	<b>FTK-25</b>
40	Barb	<b>PJTK-40-NBR</b>	<b>PJG-40-NBR</b>	PJTK-40-SI	PJG-40-SI	<b>FTK-25</b>
50	Barb	<b>PJTK-50-NBR</b>	<b>PJG-50-NBR</b>	<b>PJTK-50-SI</b>	<b>PJG-50-SI</b>	<b>FTK-50</b>
60	1/8 BSPP	PJTK-60-NBR-G1	PJG-60-NBR	PJTK-60-SI-G1	PJG-60-SI	<b>FTK-60-G1</b>
60	1/8 NPT	PJTK-60-NBR-N1	PJG-60-NBR	PJTK-60-SI-N1	PJG-60-SI	<b>FTK-60-N1</b>
80	1/8 BSPP	PJTK-80-NBR-G1	PJG-80-NBR	PJTK-80-SI-G1	PJG-80-SI	<b>FTK-60-G1</b>
80	1/8 NPT	PJTK-80-NBR-N1	PJG-80-NBR	PJTK-80-SI-N1	PJG-80-SI	<b>FTK-60-N1</b>

■ Most popular.



<b>A</b>
Technical
PFG Flat
PBG Bellows
P5V-CFS Flat
PJG Short Bellows
PCG Multiple Bellows
PUGB Flat Swivel
Cup Fittings

**Ordering Information**

**PJG Short Bellows Vacuum Cups**

**A**

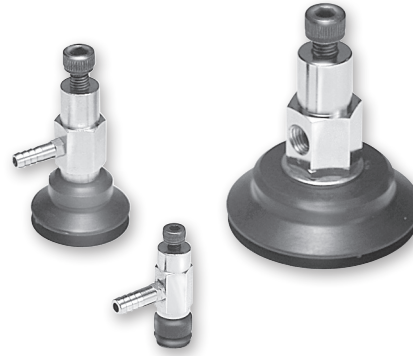
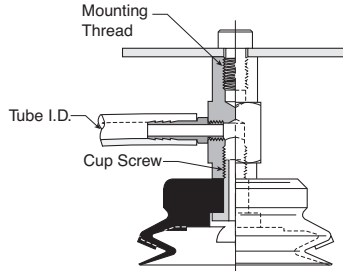
**PJYK Series 90° Barbed Adapter**

Side stem connectors allow you to secure the stem with a bolt through a plate or "L" bracket to allow the tube connection from the side port. Fitting material: nickel plated brass.

**Installation**

**Note:**

When installing cup assemblies, use a sealant material to secure the assembly and prevent vacuum leakage.



Cup diameter (mm)	Vacuum port	Complete assembly Nitrile	Replacement cup Nitrile (NB)	Complete assembly Silicon (SI)	Replacement cup Silicon (SI)	Replacement cup fitting
6	Barb	PJYK-6-NBR	PJG-6-NBR	<b>PJYK-6-SI</b>	<b>PJG-6-SI</b>	<b>FYK-5A</b>
8	Barb	<b>PJYK-8-NBR</b>	<b>PJG-8-NBR</b>	<b>PJYK-8-SI</b>	<b>PJG-8-SI</b>	<b>FYK-5A</b>
10	Barb	PJYK-10-NBR	PJG-10-NBR	<b>PJYK-10-SI</b>	<b>PJG-10-SI</b>	<b>FYK-15</b>
15	Barb	PJYK-15-NBR	PJG-15-NBR	<b>PJYK-15-SI</b>	<b>PJG-15-SI</b>	<b>FYK-15</b>
20	Barb	PJYK-20-NBR	PJG-20-NBR	PJYK-20-SI	PJG-20-SI	FYK-20
30	Barb	<b>PJYK-30-NBR</b>	<b>PJG-30-NBR</b>	<b>PJYK-30-SI</b>	<b>PJG-30-SI</b>	<b>FYK-25</b>
40	Barb	<b>PJYK-40-NBR</b>	<b>PJG-40-NBR</b>	PJYK-40-SI	PJG-40-SI	<b>FYK-25</b>
50	Barb	<b>PJYK-50-NBR</b>	<b>PJG-50-NBR</b>	<b>PJYK-50-SI</b>	<b>PJG-50-SI</b>	<b>FYK-50</b>
60	1/8 BSPP	PJYK-60-NBR-G1	PJG-60-NBR	PJYK-60-SI-G1	PJG-60-SI	FYK-60-G1
60	1/8 NPT	PJYK-60-NBR-N1	PJG-60-NBR	PJYK-60-SI-N1	PJG-60-SI	<b>FYK-60-N1</b>
80	1/8 BSPP	PJYK-80-NBR-G1	PJG-80-NBR	PJYK-80-SI-G1	PJG-80-SI	FYK-60-G1
80	1/8 NPT	PJYK-80-NBR-N1	PJG-80-NBR	PJYK-80-SI-N1	PJG-80-SI	<b>FYK-60-N1</b>

■ Most popular.



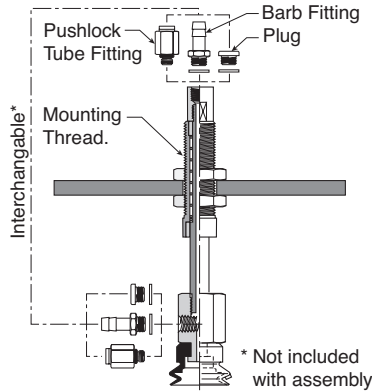
**PJTYS Series Bulkhead Level Compensator**

303 stainless steel construction secured with jam nuts. Spring biased compensators can absorb impacts of down-strokes and adjust for different levels of pick up points. 303 stainless corrosion resistant materials with drymet bushings increases the strength and life.

**Installation**

**Note:**

When installing cup assemblies, use a sealant material to secure the assembly and prevent vacuum leakage. Shown are interchangeable connectors & plugs for port connections.



Cup dia. (mm)	Vacuum port	Stroke (mm)	Spring compression Force lbf (N)		Cup material Nitrile assembly (NBR)	Replacement cup Nitrile (NBR)	Cup material Silicon assembly (SI)	Replacement cup Silicon (SI)	Level Compensator P/N
			0%	100%					
10	M5	10	.56 (2.5)	1.2 (4.9)	PJTYS1010NBRM5	PJG-10-NBR	PJTYS1010SIM5	PJG-10-SI	JTYS-10-10
10	M5	15	.67 (2.5)	1.4 (5.9)	PJTYS1015NBRM5	PJG-10-NBR	PJTYS1015SIM5	PJG-10-SI	JTYS-10-15
15	M5	10	.56 (2.5)	1.2 (4.9)	<b>PJTYS15A10NBRM5</b>	<b>PJG-15A-NBR</b>	<b>PJTYS15A10SIM5</b>	<b>PJG-15A-SI</b>	<b>JTYS-10-10</b>
15	M5	15	.67 (2.5)	1.4 (5.9)	<b>PJTYS15A15NBRM5</b>	<b>PJG-15A-NBR</b>	<b>PJTYS15A15SIM5</b>	<b>PJG-15A-SI</b>	<b>JTYS-10-15</b>
30	M5	15	.56 (2.5)	.79 (3.4)	<b>PJTYS3015NBRM5</b>	<b>PJG-30-NBR</b>	<b>PJTYS3015SIM5</b>	<b>PJG-30-SI</b>	<b>TYS-20B-15</b>
30	M5	30	.67 (2.9)	1.4 (5.9)	<b>PJTYS3030NBRM5</b>	<b>PJG-30-NBR</b>	<b>PJTYS3030SIM5</b>	<b>PJG-30-SI</b>	<b>TYS-20B-30</b>
40	M5	15	.56 (2.5)	.79 (3.4)	<b>PJTYS4015NBRM5</b>	<b>PJG-40-NBR</b>	PJTYS4015SIM5	PJG-40-SI	<b>TYS-20B-15</b>
40	M5	30	.67 (2.9)	1.4 (5.9)	<b>PJTYS4030NBRM5</b>	<b>PJG-40-NBR</b>	PJTYS4030SIM5	PJG-40-SI	<b>TYS-20B-30</b>
50	M5	15	.56 (.25)	1.2 (4.9)	<b>PJTYS5015NBRM5</b>	<b>PJG-50-NBR</b>	<b>PJTYS5015SIM5</b>	<b>PJG-50-SI</b>	<b>TYS-50-15</b>
50	M5	30	.67 (2.9)	1.4 (5.9)	<b>PJTYS5030NBRM5</b>	<b>PJG-50-NBR</b>	<b>PJTYS5030SIM5</b>	<b>PJG-50-SI</b>	<b>TYS-50-30</b>
60	1/8 NPT	30	1.6 (6.8)	3.6 (15.6)	PJTYS6030NBRN1	PJG-60-NBR	PJTYS6030SIN1	PJG-60-SI	<b>TYS-60-30</b>
60	1/8 NPT	50	1.9 (8.3)	4.5 (19.6)	PJTYS6050NBRN1	PJG-60-NBR	PJTYS6050SIN1	PJG-60-SI	<b>TYS-60-50</b>
80	1/8 NPT	30	1.6 (6.8)	3.6 (15.6)	PJTYS8030NBRN1	PJG-80-NBR	PJTYS8030SIN1	PJG-80-SI	<b>TYS-60-30</b>
80	1/8 NPT	50	1.9 (8.3)	4.5 (19.6)	PJTYS8050NBRN1	PJG-80-NBR	PJTYS8050SIN1	PJG-80-SI	<b>TYS-60-50</b>

■ Most popular.

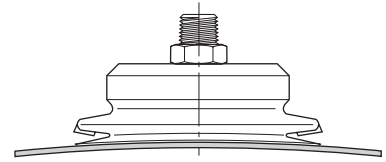
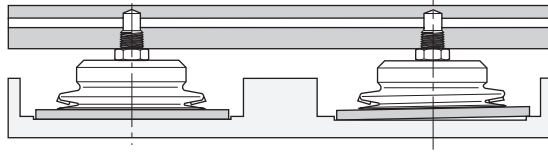
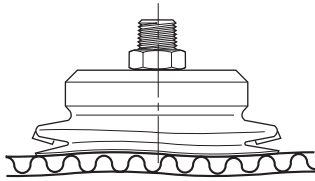


<b>A</b>
Technical
PFG Flat
PBG Bellows
P5V-CFS Flat
PJG Short Bellows
PCG Multiple Bellows
PUGB Flat Swivel
Cup Fittings

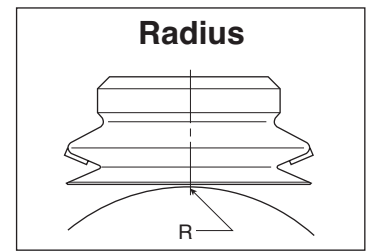
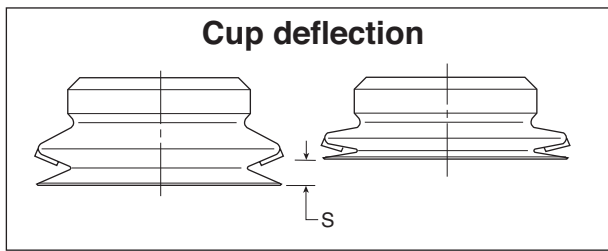
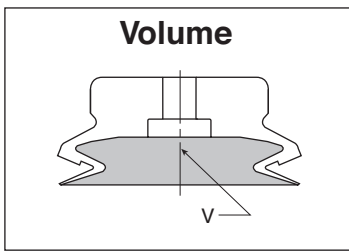
A

Applications

- High speed packaging
- Level compensation for small electronic components
- Flexible product
- Soft seal lip



Main data for short bellows PJG cups

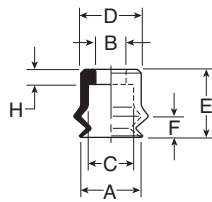


Model number	Cup diameter inches (mm)	Area cm <sup>2</sup>	Volume (V) liters	Lifting force @ 60% (N)		Cup deflection (S) mm	Radius R (mm)
PJG-6-*	.24 (6)	.28	0.000016	1.70	—	4.2	4.0
PJG-8-*	.31 (8)	.50	0.00007	3.10	—	4.0	5.0
PJG-10-*	.39 (10)	0.79	0.00017	4.80	—	3.0	6.0
PJG-15-*	.59 (15)	1.77	0.0005	10.8	—	3.3	10.0
PJG-20-*	.79 (20)	3.14	0.0012	19.2	—	5.5	13.0
PJG-30-*	1.18 (30)	7.07	0.003	43.2	—	7.0	26.0
PJG-40-*	1.57 (40)	12.6	0.005	76.9	—	7.2	37.0
PJG-50-*	1.97 (50)	19.6	0.008	120	—	9.0	41.0
PJG-60-*	2.36 (60)	28.3	0.020	173	—	8.0	70.0
PJG-80-*	3.15 (80)	50.3	0.040	308	—	9.5	100.0

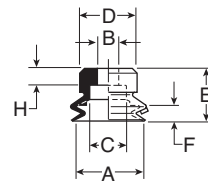
\*Cup material

**PJG Series Replacement Cup Dimensions**

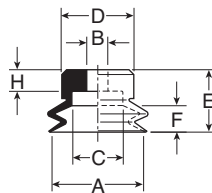
**PJG-6 and  
 PJG-8**



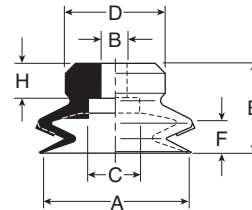
**PJG-10 and  
 PJG-15**



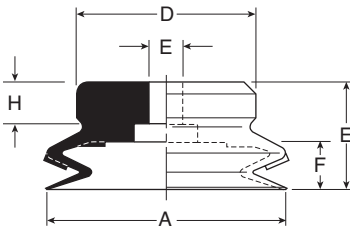
**PJG-20**



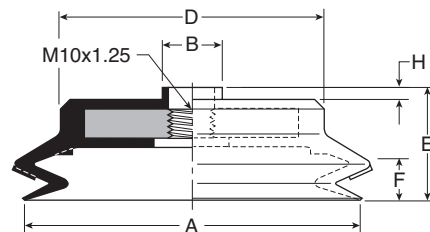
**PJG-30 thru  
 PJG-40**



**PJG-50**



**PJG-60 thru  
 PJG-80**



Model number	ØA	ØB	ØC	ØD	E	F	H
PJG-6-*	.24 (6)	.16 (4)	.24 (6)	.30 (7.5)	.35 (9)	.17 (4.2)	.08 (2)
PJG-8-*	.31 (8)	.16 (4)	.24 (6)	.31 (8)	.35 (9)	.16 (4)	.08 (2)
PJG-10-*	.39 (10)	.18 (4.6)	.31 (7.8)	.43 (11)	.37 (9.5)	.12 (3)	.14 (3.5)
PJG-15-*	.59 (15)	.18 (4.6)	.31 (7.8)	.47 (12)	.43 (11)	.13 (3.3)	.14 (3.5)
PJG-20-*	.79 (20)	.18 (4.6)	.43 (10.8)	.59 (15)	.51 (13)	.22 (5.5)	.18 (4.5)
PJG-30-*	1.18 (30)	.23 (5.8)	.43 (10.8)	.78 (20)	.71 (18)	.28 (7)	.28 (7)
PJG-35-*	1.38 (35)	.23 (5.8)	.43 (10.8)	.98 (25)	.71 (18)	.28 (7)	.28 (7)
PJG-40-*	1.57 (40)	.23 (5.8)	.43 (10.8)	1.18 (30)	.71 (18)	.28 (7.2)	.28 (7)
PJG-50-*	1.97 (50)	.31 (7.8)	.78 (19.8)	1.57 (40)	.79 (20)	.35 (9)	.28 (7)
PJG-60-*	2.36 (60)	.49 (12.5)	—	1.77 (45)	.89 (22.5)	.31 (8)	.10 (2.5)
PJG-70-*	2.75 (70)	.49 (12.5)	—	2.17 (55)	.93 (23.5)	.37 (9.5)	.10 (2.5)
PJG-80-*	3.15 (80)	.49 (12.5)	—	2.68 (68)	.93 (23.5)	.37 (9.5)	.10 (2.5)

Inches (mm)  
 \* Cup material

<b>A</b>
Technical
PFG Flat
PBG Bellows
P5V-CFS Flat
PJG Short Bellows
PCG Multiple Bellows
PUGB Flat Swivel
Cup Fittings

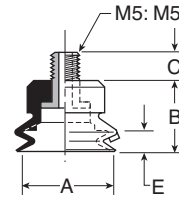
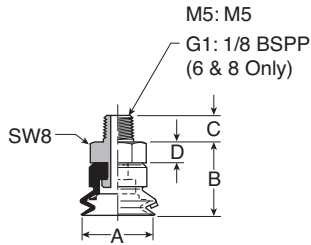


**Dimensions**

**A**

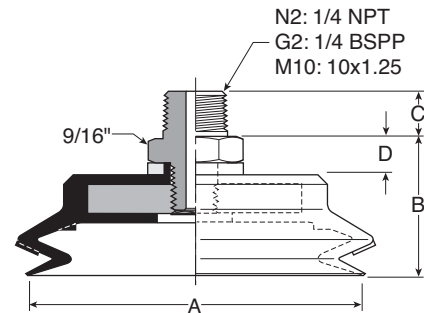
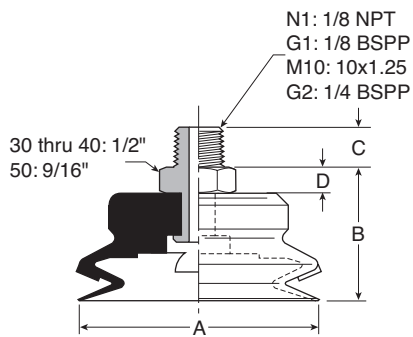
**PJTM-6 and  
 PJTM-8**

**PJTM-10 thru  
 PJTM-20**



**PJTM-30 thru  
 PJTM-50**

**PJTM-60 thru  
 PJTM-80**

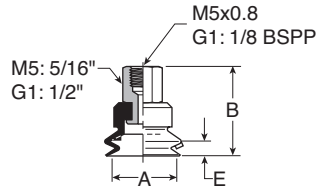


Model number	ØA	B	C (M5)	C (N1 / G1)	C (M10 / G2)	C (N2)	D
PJTM-6-*†	.24 (6)	.49 (12.5)	.18 (4.5)	.31 (8)	—	—	.14 (3.5)
PJTM-8-*†	.31 (8)	.49 (12.5)	.18 (4.5)	.31 (8)	—	—	.14 (3.5)
PJTM-10-*†	.39 (10)	.37 (9.5)	.20 (5)	—	—	—	—
PJTM-15-*†	.59 (15)	.43 (11)	.20 (5)	—	—	—	—
PJTM-20-*†	.79 (20)	.51 (13)	.20 (5)	—	—	—	—
PJTM-30-*†	1.18 (30)	.91 (23)	—	.31 (8)	.39 (10)	—	.20 (5)
PJTM-40-*†	1.57 (40)	.91 (23)	—	.31 (8)	.39 (10)	—	.20 (5)
PJTM-50-*†	1.97 (50)	.98 (25)	—	.31 (8)	.39 (10)	—	.20 (5)
PJTM-60-*†	2.36 (60)	1.06 (27)	—	—	.39 (10)	.59 (15)	.28 (7)
PJTM-80-*†	3.15 (80)	1.10 (28)	—	—	.39 (10)	.59 (15)	.28 (7)

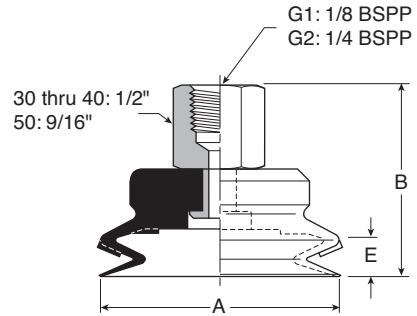
Inches (mm)  
 \* Cup material  
 † Thread size

**Dimensions**

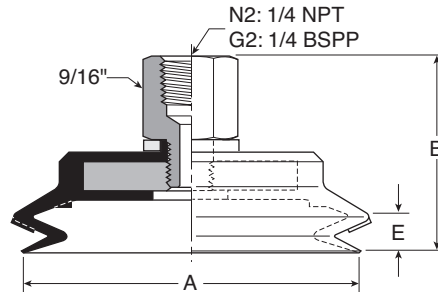
**PJTF-6 and  
 PJTF-8**



**PJTF-30 thru  
 PJTF-50**



**PJTF-60 thru  
 PJTF-80**



Model number	ØA	B	B (M5)	E
PJTF-6-*.†	.24 (6)	.79 (20)	.55 (14)	.16 (4)
PJTF-8-*.†	.31 (8)	.79 (20)	.55 (14)	.16 (4)
PJTF-10-*.†	.39 (10)	.79 (20)	.55 (14)	.12 (3)
PJTF-15-*.†	.59 (15)	.79 (20)	.55 (14)	.13 (3.3)
PJTF-30-*.†	1.18 (30)	1.25 (32)	—	.28 (7)
PJTF-40-*.†	1.57 (40)	1.25(32)	—	.28 (7.2)
PJTF-50-*.†	1.97 (50)	1.34 (34)	—	.35 (9)
PJTF-60-*.†	2.36 (60)	1.56 (39.5)	—	.31 (8)
PJTF-80-*.†	3.15 (80)	1.59 (40.5)	—	.37 (9.5)

Inches (mm)  
 \* Cup material  
 † Thread size

**A**

Technical

PFG  
Flat

PBG  
Bellows

P5V-CFS  
Flat

PJG Short  
Bellows

PCG  
Multiple  
Bellows

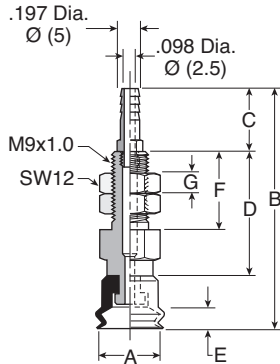
PUGB  
Flat Swivel

Cup  
Fittings

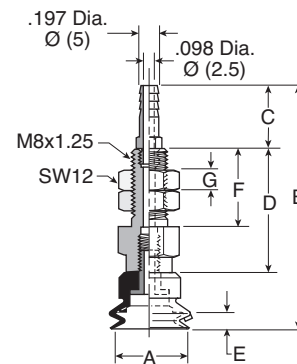
**Dimensions**

**A**

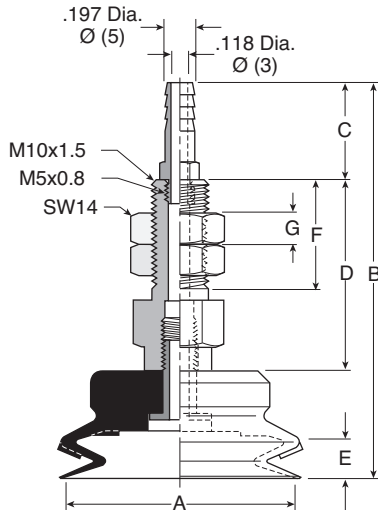
**PJTK-6 and  
 PJTK-8**



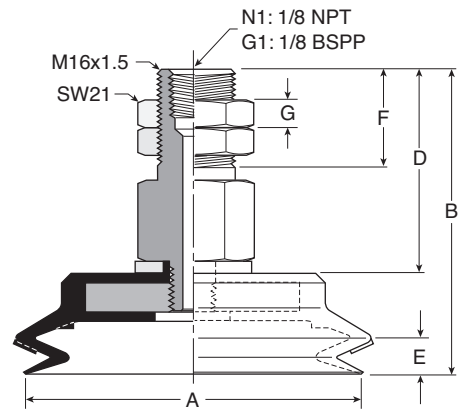
**PJTK-10 thru  
 PJTK-20**



**PJTK-30 thru  
 PJTK-50**



**PJTK-60 thru  
 PJTK-80**

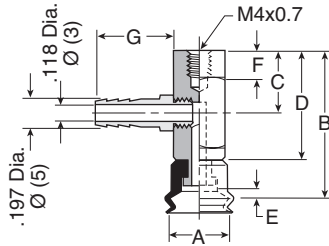


Model number	ØA	B	C	D	E	F	G	Wt oz (g)
PJTK-6-*	.24 (6)	1.30 (33)	.39 (10)	.55 (14)	.17 (4.2)	.47 (12)	.12 (3)	.4 (11)
PJTK-8-*	.31 (8)	1.30 (33)	.39 (10)	.55 (14)	.16 (4)	.47 (12)	.12 (3)	.4 (11)
PJTK-10-*	.39 (10)	1.87 (47.5)	.63 (16)	.87 (22)	.12 (3)	.59 (15)	.12 (3)	.5 (14)
PJTK-15-*	.59 (15)	1.93 (49)	.63 (16)	.87 (22)	.13 (3.3)	.59 (15)	.12 (3)	.5 (15)
PJTK-20-*	.79 (20)	2.01 (51)	.63 (16)	.87 (22)	.22 (5.5)	.59 (15)	.20 (5)	.6 (17)
PJTK-30-*	1.18 (30)	2.60 (66)	.63 (16)	1.26 (32)	.28 (7)	.79 (20)	.20 (5)	1.5 (42)
PJTK-40-*	1.57 (40)	2.60 (66)	.63 (16)	1.26 (32)	.28 (7.2)	.79 (20)	.20 (5)	1.6 (44)
PJTK-50-*	1.97 (50)	2.68 (68)	.63 (16)	1.26 (32)	.35 (9)	.79 (20)	.20 (5)	25.0 (58)
PJTK-60-*.†	2.36 (60)	2.46 (62.5)	—	1.67 (42.5)	.31 (8)	.79 (20)	.24 (6)	5.1 (144)
PJTK-80-*.†	3.15 (80)	2.50 (63.5)	—	1.67 (42.5)	.37 (9.5)	.79 (20)	.24 (6)	6.7 (190)

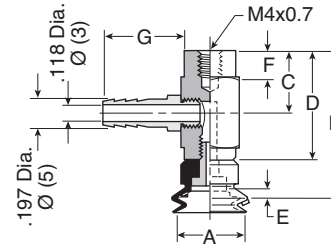
Inches (mm)  
 \* Cup material  
 † Vacuum port

**Dimensions**

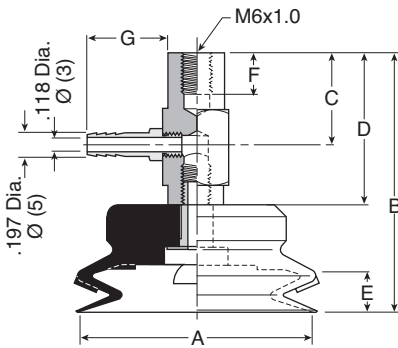
**PJYK-6 and  
 PJYK-8**



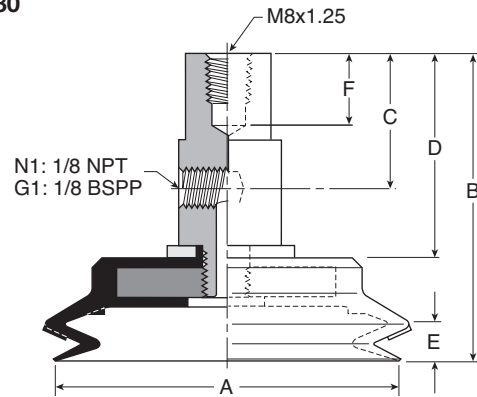
**PJYK-10 thru  
 PJYK-20**



**PJYK-25 thru  
 PJYK-50**



**PJYK-60 thru  
 PJYK-80**



Model number	ØA	B	C	D	E	F	G	Wt oz (g)
PJYK-6-*	.24 (6)	1.24 (31.5)	.51 (13)	.89 (22.5)	.17 (4.2)	.24 (6)	.63 (16)	.56 (16)
PJYK-8-*	.31 (8)	1.24 (31.5)	.51 (13)	.89 (22.5)	.17 (4.2)	.24 (6)	.63 (16)	.56 (16)
PJYK-10-*	.39 (10)	1.24 (31.5)	.55 (14)	.87 (22)	.12 (3)	.24 (6)	.63 (16)	.59 (17)
PJYK-15-*	.59 (15)	1.30 (33)	.55 (14)	.87 (22)	.13 (3.3)	.24 (6)	.63 (16)	.63 (18)
PJYK-20-*	.79 (20)	1.38 (35)	.55 (14)	.87 (22)	.22 (5.5)	.24 (6)	.63 (16)	.7 (20)
PJYK-30-*	1.18 (30)	1.97 (50)	.79 (20)	1.26 (32)	.28 (7)	.31 (8)	.63 (16)	1.6 (46)
PJYK-40-*	1.57 (40)	1.97 (50)	.79 (20)	1.26 (32)	.28 (7.2)	.31 (8)	.63 (16)	1.7 (48)
PJYK-50-*	1.97 (50)	2.05 (52)	.79 (20)	1.26 (32)	.35 (9)	.31 (8)	.63 (16)	2.2 (62)
PJYK-60-*,†	2.36 (60)	2.46 (62.5)	1.10 (28)	1.67 (42.5)	.31 (8)	.43 (11)	—	4.9 (139)
PJYK-80-*,†	3.15 (80)	2.50 (63.5)	1.10 (28)	1.67 (42.5)	.37 (9.5)	.43 (11)	—	6.5 (185)

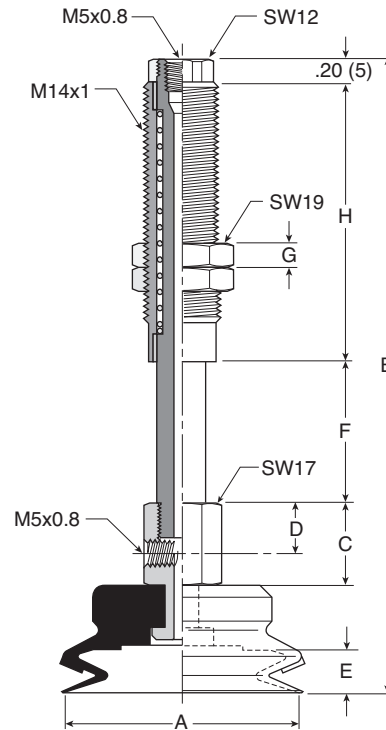
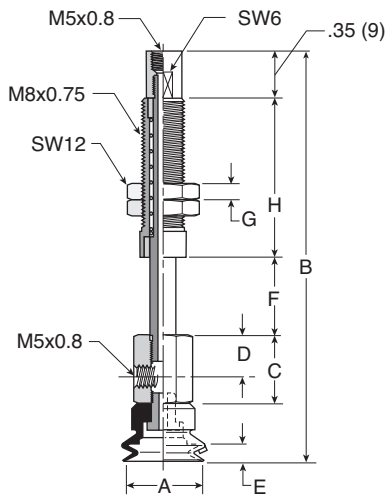
Inches (mm)  
 \* Cup material  
 † Vacuum port

<b>A</b>
Technical
PFG Flat
PBG Bellows
P5V-CFS Flat
PJG Short Bellows
PCG Multiple Bellows
PUGB Flat Swivel
Cup Fittings

**Dimensions**

**PJTYS10 thru  
PJTYS20**

**PJTYS30 thru  
PJTYS50**

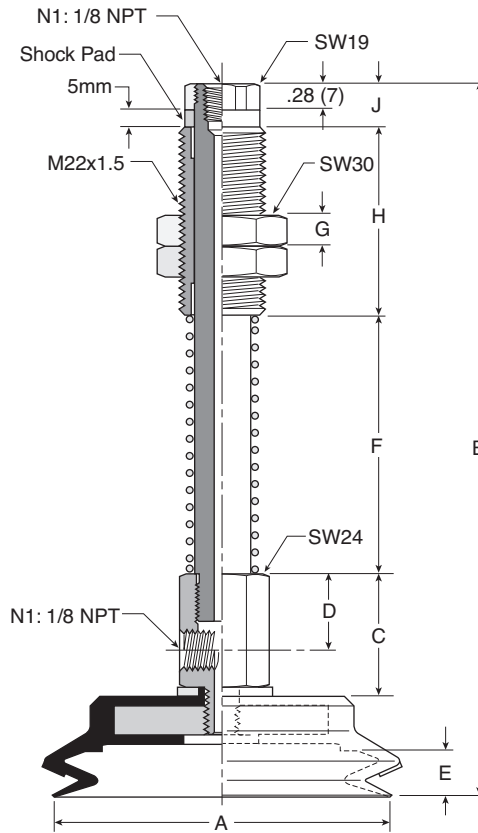


Model number	ØA	B	C	D	E	F	G	H	Wt oz (g)
PJTYS1010**†	.39 (10)	2.52 (64)	.51 (13)	.31 (8)	.12 (3)	.39 (10)	.20 (5)	.91 (23)	1.1 (31)
PJTYS1015**†	.39 (10)	3.01 (76.5)	.51 (13)	.31 (8)	.12 (3)	.59 (15)	.20 (5)	1.20 (30.5)	1.2 (33.5)
PJTYS1510**†	.59 (15)	2.60 (66)	.51 (13)	.31 (8)	.13 (3.3)	.39 (10)	.20 (5)	.91 (23)	1.1 (32)
PJTYS1515**†	.59 (15)	3.07 (78)	.51 (13)	.31 (8)	.13 (3.3)	.59 (15)	.20 (5)	1.20 (30.5)	1.3 (34.5)
PJTYS2010**†	.79 (20)	2.83 (72)	.51 (13)	.31 (8)	.22 (5.5)	.39 (10)	.20 (5)	.91 (23)	1.1 (32)
PJTYS2015**†	.79 (20)	4.29 (109)	.51 (13)	.31 (8)	.22 (5.5)	.59 (15)	.20 (5)	1.20 (30.5)	1.3 (34.5)
PJTYS3015**†	1.18 (30)	3.58 (91)	.67 (17)	.39 (10)	.28 (7)	.59 (15)	.20 (5)	1.42 (36)	2.6 (74)
PJTYS3030**†	1.18 (30)	5.04 (128)	.67 (17)	.39 (10)	.28 (7)	1.18 (30)	.20 (5)	2.28 (58)	3.5 (99)
PJTYS3515**†	1.38 (35)	3.58 (91)	.67 (17)	.39 (10)	.28 (7)	.59 (15)	.20 (5)	1.42 (36)	2.7 (76.5)
PJTYS3530**†	1.38 (35)	5.04 (128)	.67 (17)	.39 (10)	.28 (7)	1.18 (30)	.20 (5)	2.28 (58)	3.6 (101.5)
PJTYS4015**†	1.57 (40)	3.58 (91)	.67 (17)	.39 (10)	.28 (7.2)	.59 (15)	.20 (5)	1.42 (36)	2.8 (78.5)
PJTYS4030**†	1.57 (40)	5.04 (128)	.67 (17)	.39 (10)	.28 (7.2)	1.18 (30)	.20 (5)	2.28 (58)	3.7 (103.5)
PJTYS5015**†	1.97 (50)	3.66 (93)	.67 (17)	.39 (10)	.35 (9)	.59 (15)	.20 (5)	1.42 (36)	3.3 (94)
PJTYS5030**†	1.97 (50)	5.12 (130)	.67 (17)	.39 (10)	.35 (9)	1.18 (30)	.20 (5)	2.28 (58)	4.2 (119)

Inches (mm)  
\*\* Cup material  
† Vacuum port

**Dimensions**

**PJTYS60 thru  
PJTYS80**



Model number	ØA	B	C	D	E	F	G	H	J	Wt oz (g)
PJTYS6030 <sup>†</sup>	2.36 (60)	6.18 (157)	1.18 (30)	.79 (20)	.31 (8)	1.18 (45)	.39 (10)	1.97 (50)	.47 (12)	10.4 (294)
PJTYS6050 <sup>†</sup>	2.36 (60)	7.17 (182)	1.18 (30)	.79 (20)	.31 (8)	2.76 (70)	.39 (10)	1.97 (50)	.47 (12)	11.6 (328)
PJTYS8030 <sup>†</sup>	3.15 (80)	6.22 (158)	1.18 (30)	.79 (20)	.37 (9.5)	1.18 (45)	.39 (10)	1.97 (50)	.47 (12)	11.9 (338)
PJTYS8050 <sup>†</sup>	3.15 (80)	7.20 (183)	1.18 (30)	.79 (20)	.37 (9.5)	2.76 (70)	.39 (10)	1.97 (50)	.47 (12)	13.1 (372)

Inches (mm)  
<sup>\*\*</sup> Cup material  
<sup>†</sup> Vacuum port

**A**

Technical

PFG  
Flat

PBG  
Bellows

P5V-CFS  
Flat

PJG Short  
Bellows

PCG  
Multiple  
Bellows

PUGB  
Flat Swivel

Cup  
Fittings